

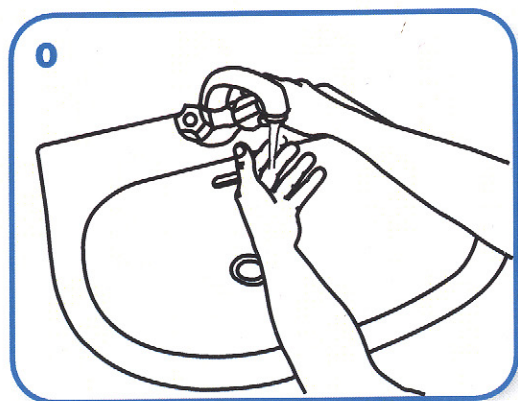
How to handwash?

Design: mandragalis network

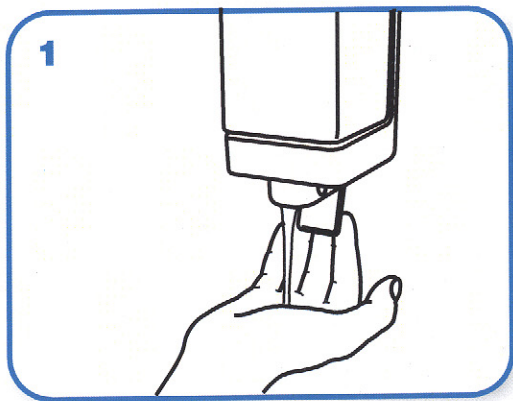
WASH HANDS ONLY WHEN VISIBLY SOILED! OTHERWISE, USE HANDRUB!



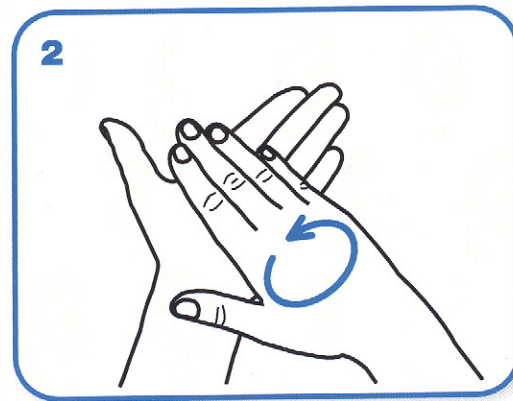
Duration of the entire procedure: **40-60 sec.**



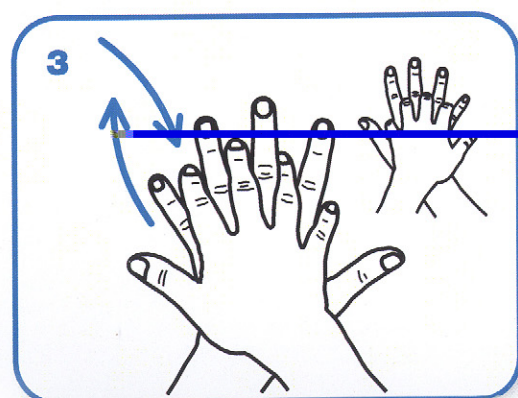
Wet hands with water



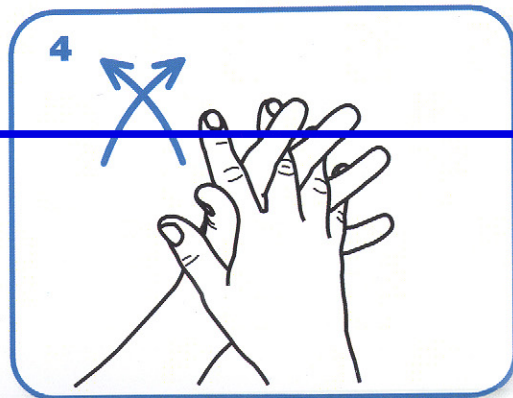
apply enough soap to cover all hand surfaces.



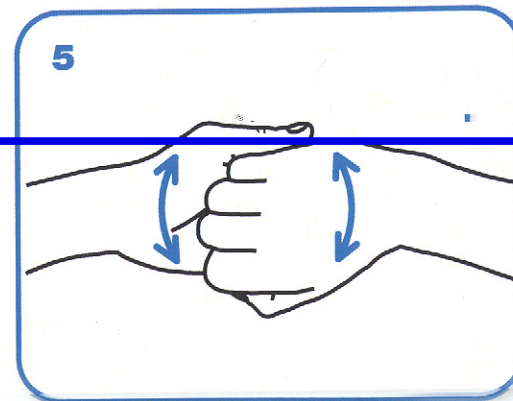
Rub hands palm to palm



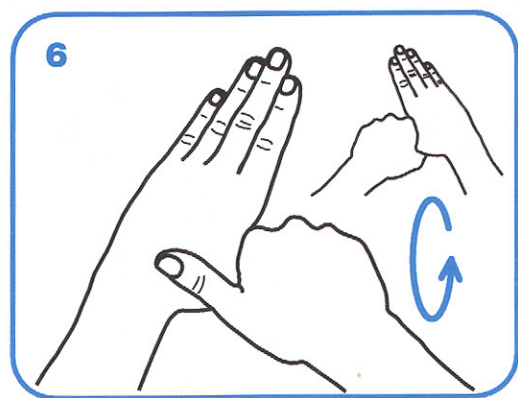
right palm over left dorsum with interlaced fingers and vice versa



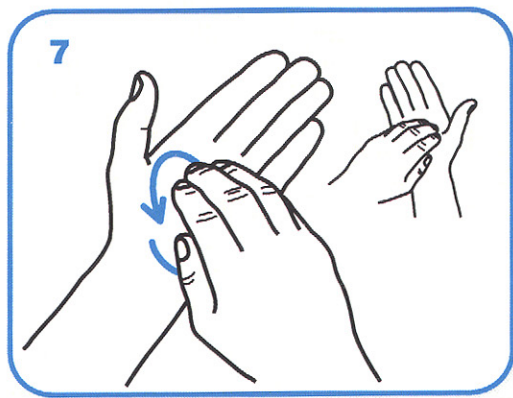
palm to palm with fingers interlaced



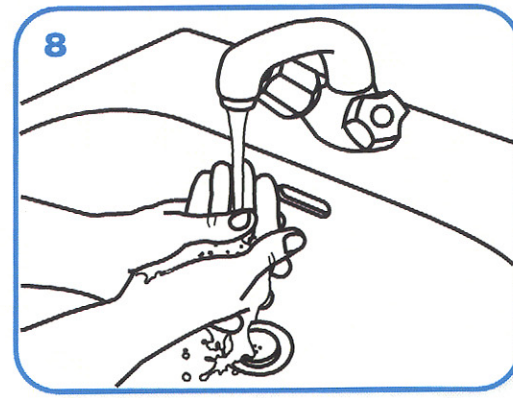
backs of fingers to opposing palms with fingers interlocked



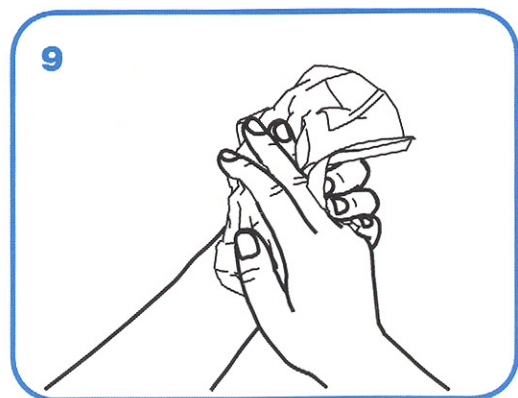
rotational rubbing of left thumb clasped in right palm and vice versa



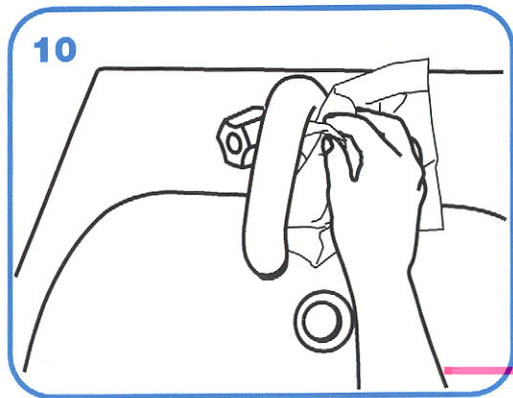
rotational rubbing, backwards and forwards with clasped fingers of right hand in left palm and vice versa.



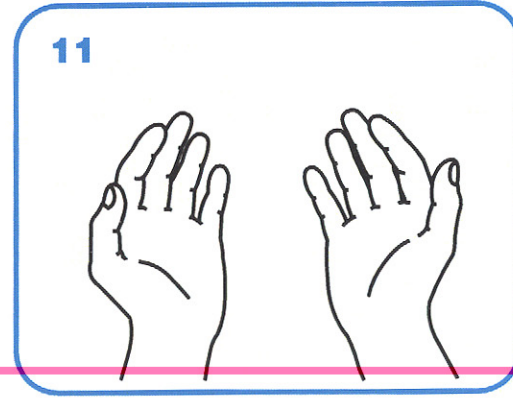
Rinse hands with water



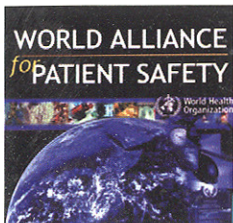
dry thoroughly with a single use towel



use towel to turn off faucet



...and your hands are safe.



WHO acknowledges the Hôpitaux Universitaires de Genève (HUG), in particular the members of the Infection Control Programme, for their active participation in developing this material.



World Health Organization

October 2006, version 1.